

# St. John Focus Area: Coral Bay

U.S. Virgin Islands  
Comprehensive  
Land and Water  
Use Plan



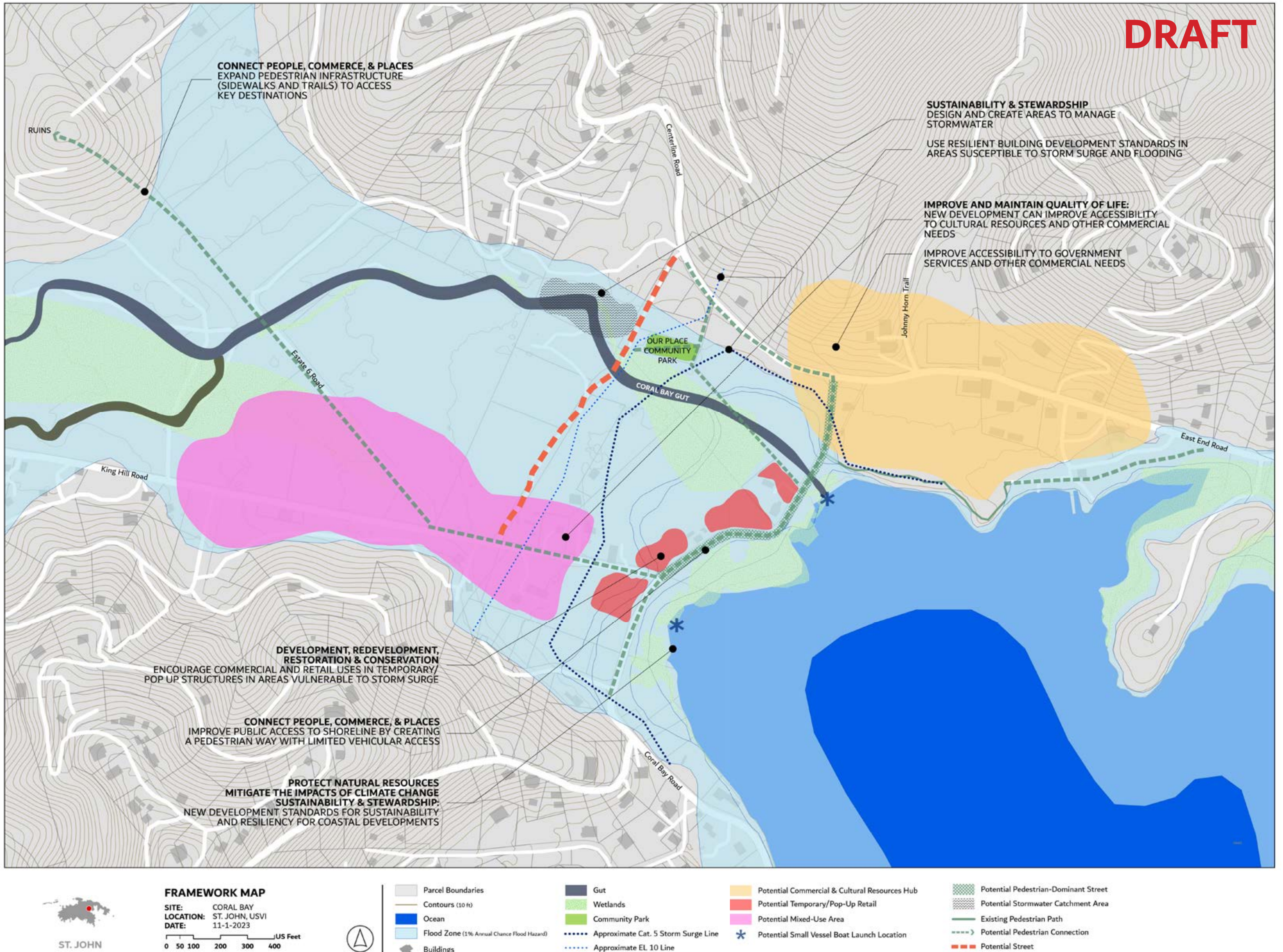
Visit [www.planusvi.com](http://www.planusvi.com) or scan the QR code to learn more about the CLWUP and stay up-to-date!



## EXISTING CONDITIONS



## FRAMEWORK MAP



# St. John Focus Area: Coral Bay

U.S. Virgin Islands  
Comprehensive  
Land and Water  
Use Plan



Visit [www.planusvi.com](http://www.planusvi.com) or scan the QR code to learn more about the CLWUP and stay up-to-date!

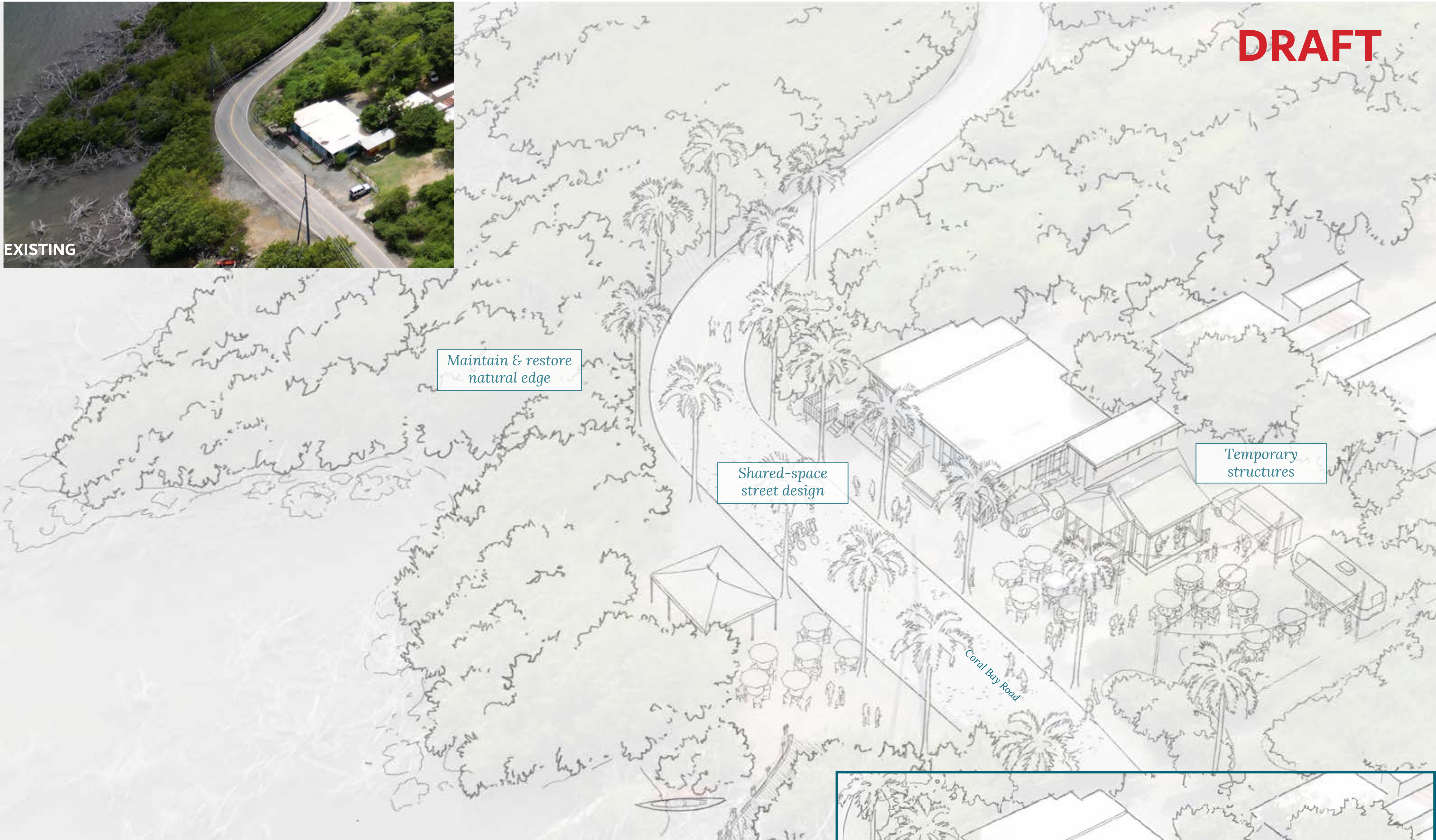


## SKETCHES TO DEMONSTRATE

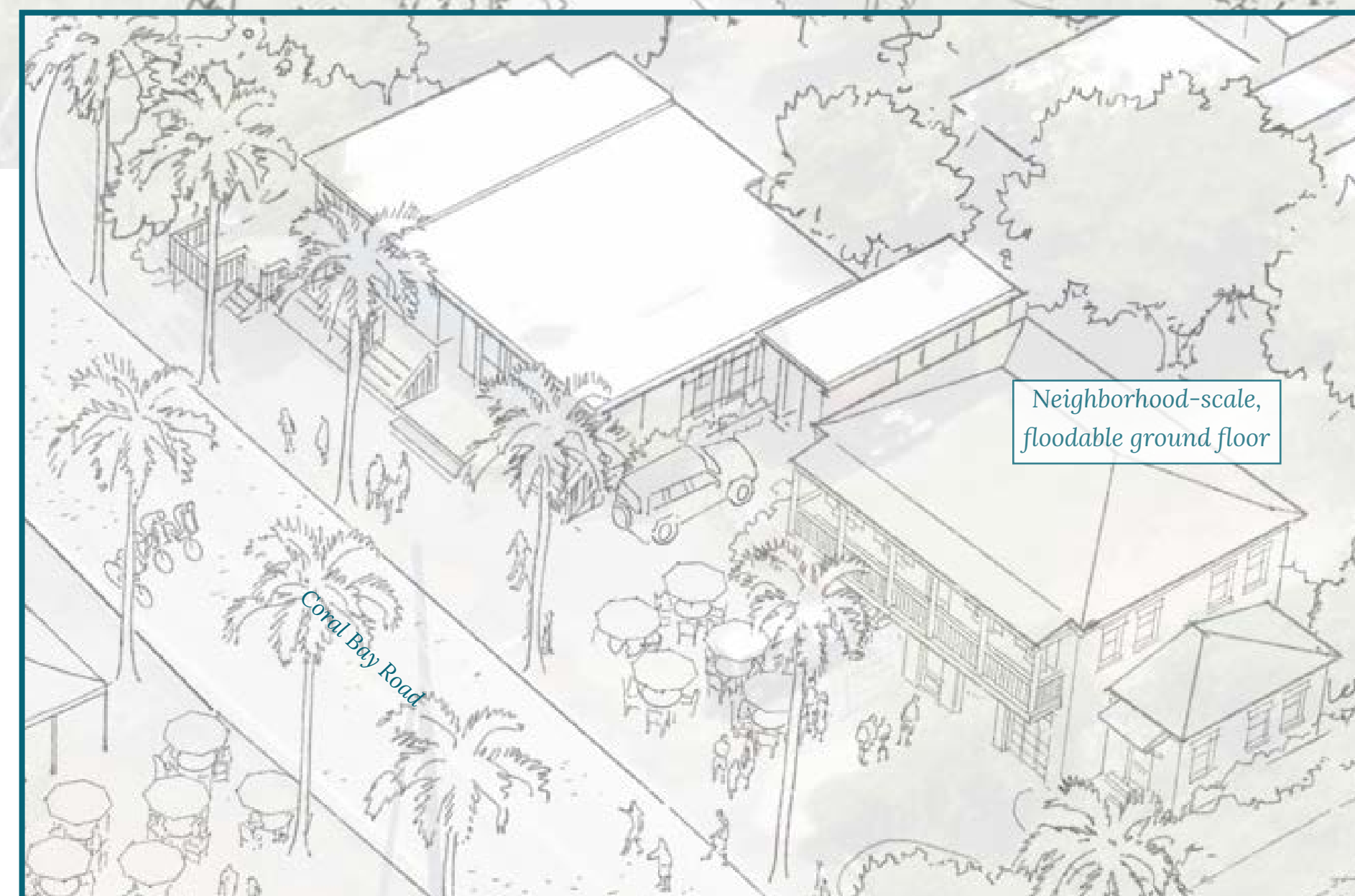
- New buildings to provide needed community services
- Improve connectivity & walkability



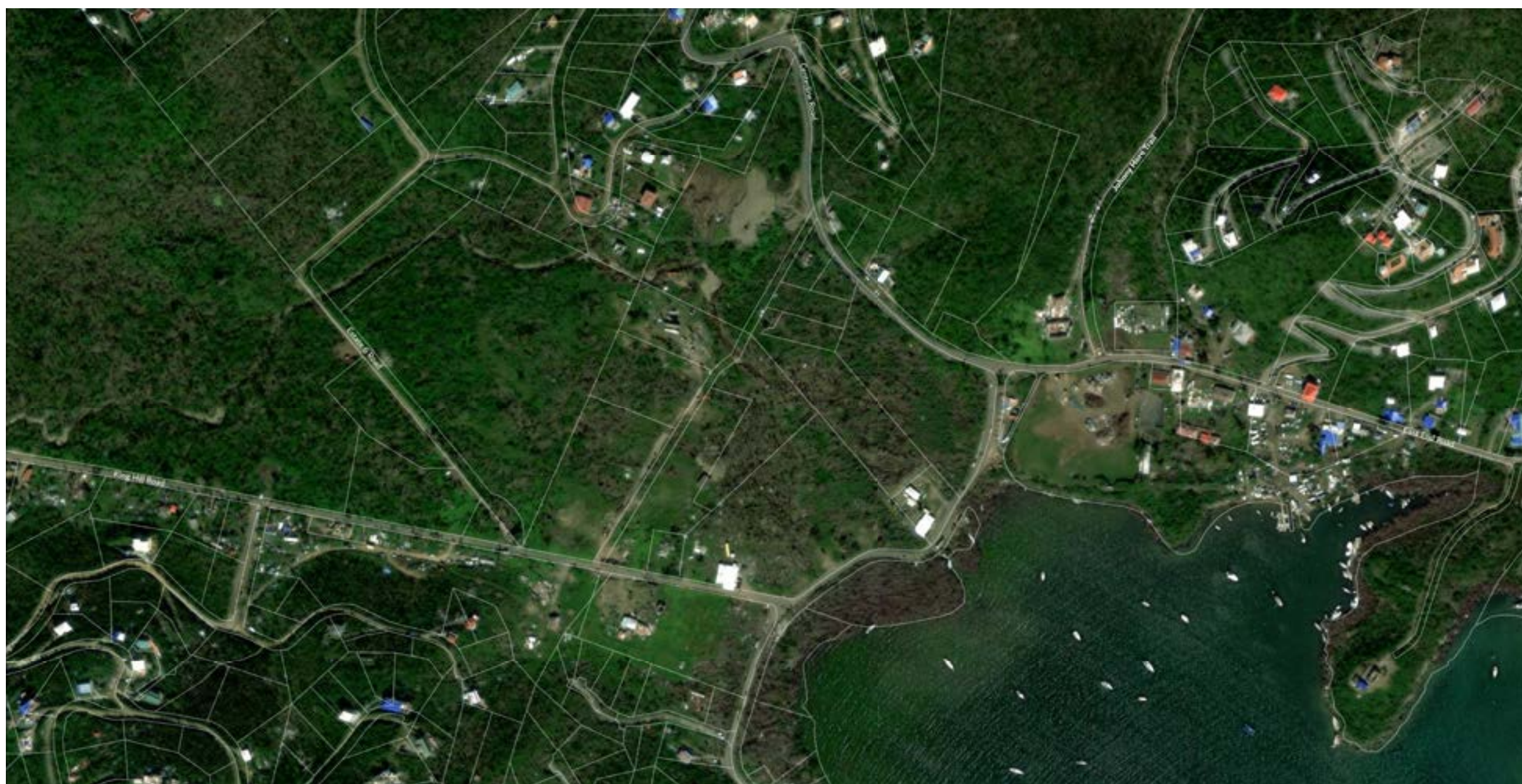
EXISTING



## What if? Potential Future Conditions



## EXISTING CONDITIONS



# St. John Focus Area: Centerline Road

U.S. Virgin Islands  
Comprehensive  
Land and Water  
Use Plan



Visit [www.planusvi.com](http://www.planusvi.com) or scan the QR code to learn more about the CLWUP and stay up-to-date!



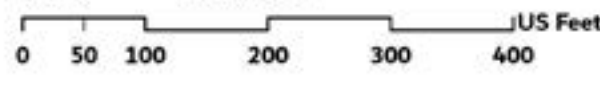
## EXISTING CONDITIONS



## FRAMEWORK MAP



**FRAMEWORK MAP**  
SITE: CENTERLINE RD  
LOCATION: ST. JOHN, USVI  
DATE: 11-1-2023



- Parcel Boundaries
- Contours (10'0)
- Gut
- Buildings
- Potential Health Clinic/Mixed-Use Area
- Potential Mixed-Use/Industry Area
- Potential Residential Area
- Potential Open Space
- Potential Traffic Calming Zone
- Potential Stormwater Catchment Area
- Existing Pedestrian Path
- Potential Pedestrian Connection
- Potential Street Connection (shared/green street)

# St. John Focus Area: Centerline Road

U.S. Virgin Islands  
Comprehensive  
Land and Water  
Use Plan

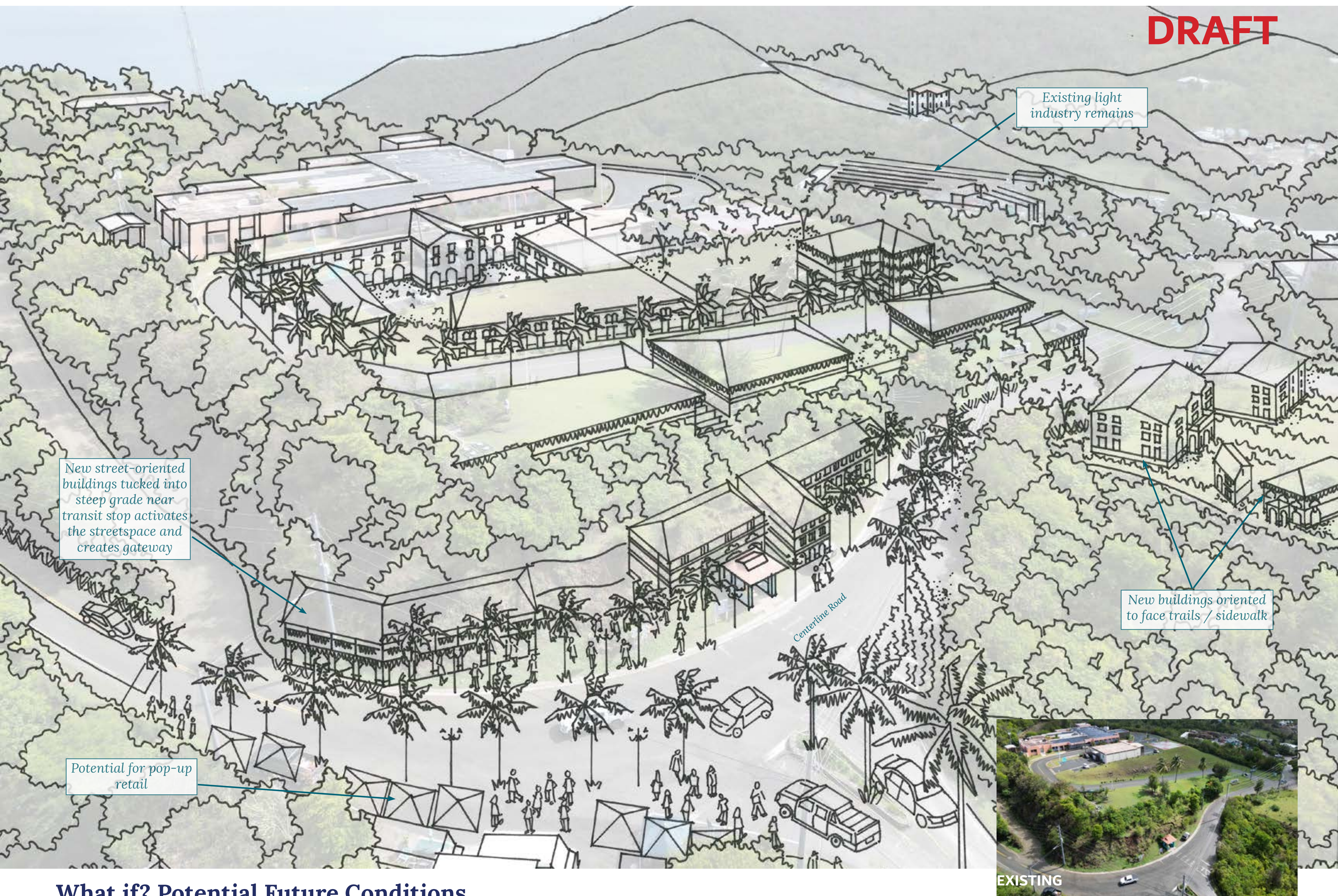


Visit [www.planusvi.com](http://www.planusvi.com) or scan the QR code to learn more about the CLWUP and stay up-to-date!



## SKETCHES TO DEMONSTRATE

- Create a new “mid-island center” near health clinic with variety of uses
- Improve walkability

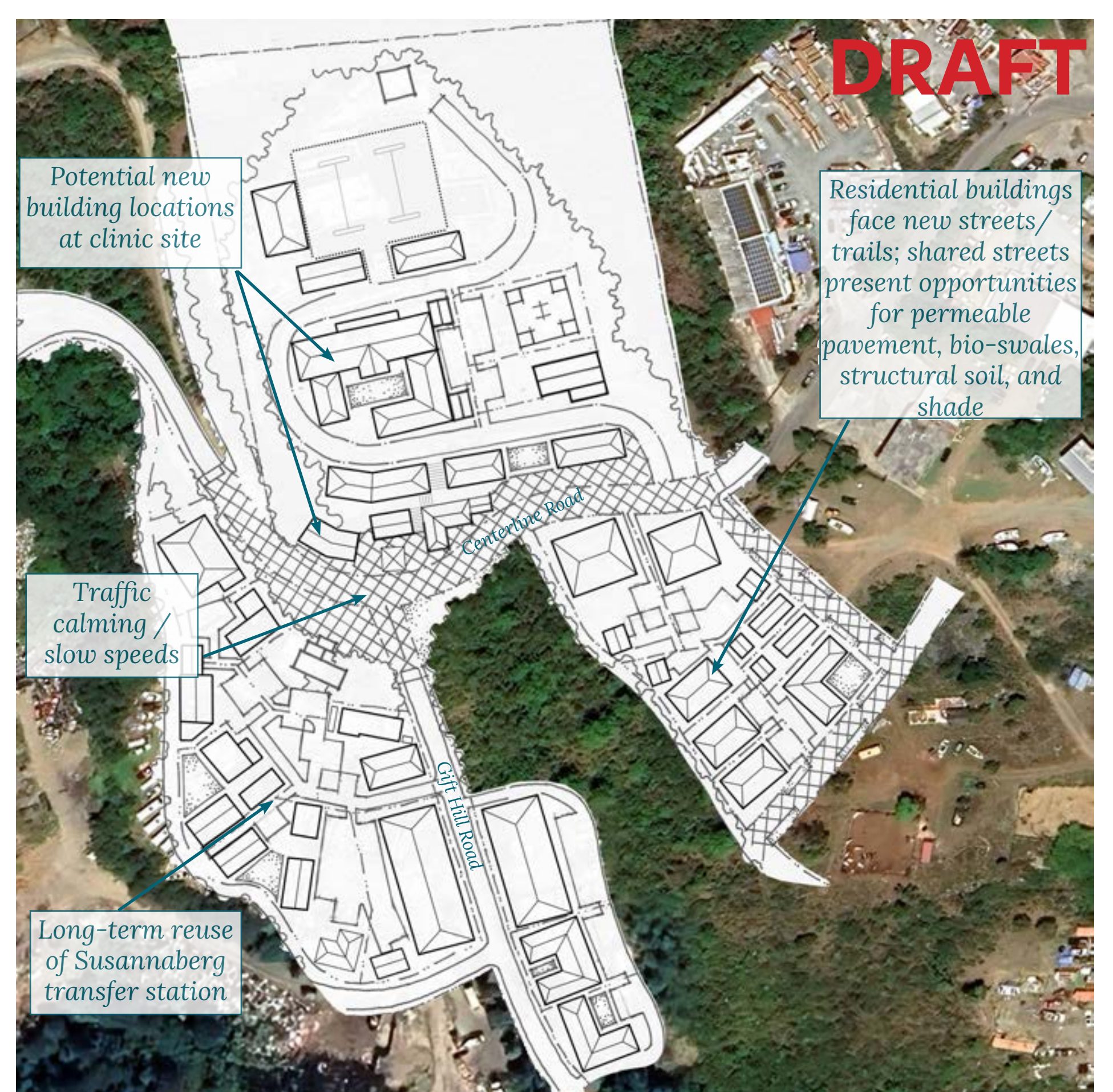


**DRAFT**

**What if? Potential Future Conditions**



**Existing Conditions**



**Potential Mixed-use Gateway on Centerline Road**